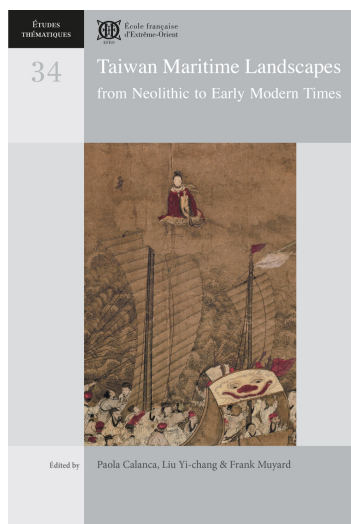


TAIWAN MARITIME LANDSCAPES



ISSN : 1269-8067

Width : 18.5

Height : 27.5

Weight : 1.18

Number of pages : 392

Distributor : EFEFO Diffusion

Geography : China, South East Asia

Language : English

Place : Paris

Support : Papier

18.5 x 27.5 cm, 392 p., Ill., English, paperback

from Neolithic to Early Modern Times

Paola CALANCA, Bérénice BELLINA, Aude FAVEREAU, Frank MUYARD, Lionel L. SIAME, Guillaume LEDUC, LIU Yi-chang, TSANG Cheng-hwa, CHIANG Chih-hua, CHEN Yu-mei, Hugh R. CLARK, CHEN Kuo-tung, Manel OLLÉ, Roger BLENCH

Collection : Études thématiques

Collection's number: 34

Editor: Calanca (Paola), Muyard (Frank) , Liu (Yi-chang)

Edition: EFEFO

2022

40,00 €

About the editor

Calanca (Paola)

Paola Calanca, after having carried out studies in History and Chinese studies, is currently Associate Professor at the École française d'Extrême-Orient (EFEFO) and teaches research seminars at the School of Advanced Studies in the Social Sciences (EHESS, Paris). Her research mainly focuses on maritime history, with special interests in Ming-Qing coastal defense, the interaction between civil and military population in coastal areas, and navigation knowledge (shipbuilding and nautical practices). She has coordinated a five-year research program (ANR-MOST, 2014–2019) on *Maritime knowledge for China Seas in the 16th–18th century* with Chen Kuo-tung (IHP, Academia Sinica).

Muyard (Frank)

Frank Muyard is currently Head of École française d'Extrême-Orient (EFEFO) Taipei Center and Associate Professor, National Central University, Taiwan. His main research interests are Taiwan and China's modern history and sociology, as well as Austronesian prehistory and South China protohistory. He is currently researching the history of Taiwanese archaeology and its interactions with state nationalism and indigenous peoples. Recent publications include "The Role of Democracy in the Rise of the Taiwanese National

Identity," in *A New Era in Democratic Taiwan* (J. Sullivan & C. Lee eds., 2018), "Taiwan Archaeology and Indigenous Peoples," in *Archaeology, History and Indigenous Peoples* (L. Hung ed., 2016), and "Comparativism and Taiwan Studies: Analyzing Taiwan in/out of Context, or Taiwan as an East Asian New World Society," in *Comparatizing Taiwan* (S. Shih & P. Liao eds., 2015).

Liu (Yi-chang)

Liu Yi-chang is currently Professor and Director of the Institute of Archaeology at National Cheng Kung University and Adjunct Research Fellow at the Institute of History and Philology, Academia Sinica, from which he retired in 2019 as Research Fellow. His main research interest is Taiwan and the South China Sea periphery, focusing mainly on Taiwan prehistory, indigenous archaeology, historical archaeology, archaeology of Southeast Asia, cultural heritage studies, and the history of Taiwan archaeology. His research objective is to comprehensively understand the history of human development in Taiwan in linking the Austronesian-dominant prehistory with the Han culture-dominant history since the 17th century by means of integrating archaeology, ethnology, early historical archives, and the oral history of the indigenous peoples.

Bank Detail

Titulaire: R/R Diffusion des publications de l'EFEO

Domiciliation: TPPARIS IBAN: FR76 1007 1750 0000 0010 0414 464 BIC: TRPUFRP1

(All bank fees have to be born by the customer)