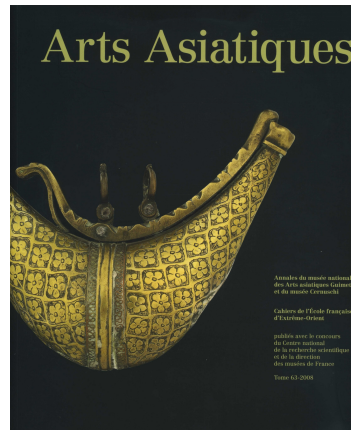


## ARTS ASIATIQUES 63 (2008)



ISSN : 0004-3958

Width : 22

Height : 27

Weight : 0,9

Number of pages : 180

Distributor : EFEF Diffusion

Geography : Indonesia, India, Asia, China, Burma (Myanmar)

Language : French, English

Place : Paris

Support : Papier

Karine Ladrech, Michela BUSSOTTI, Stephen F. TEISER,  
Alain ARRAULT, Rachel LOIZEAU, Martin POLKINGHORNE,  
Éric LEFEBVRE, Peter SKILLING, Himanshu PRABHA RAY,  
Marijke KLOKKE

Collection : Arts Asiatiques

Collection's number: 63

Edition: EFEF, Musée Guimet

2008

40,00 €

## About the collection

### Arts Asiatiques

Founded in 1924 under the title *Revue des Arts Asiatiques*, the journal was placed under the directorship of Jean Filliozat, a member of the Academy of Inscriptions and Belles-Lettres and director of the Ecole française d'Extrême-Orient (EFEF), in 1959. Since 1962 Arts Asiatiques has been published by the EFEF, in association with the Guimet and Cernuschi Museums and with the financial support of the Centre National de la Recherche Scientifique (CNRS).

From the outset, Arts Asiatiques was conceived as bridging the worlds of academia and the museum. Today, Arts Asiatiques remains one of the rare periodicals devoted to Asian art and archaeology from a rigorously scholarly perspective. Its ambition is to publish all fields of original scholarship and technical expertise and to explore the full range of primary sources useful to the comprehensive analysis of works of art, from their fabrication and transmission to their iconographic impact: archaeology, history of art and religions, social history, anthropology, material culture, architecture, conservation, textual and documentary sources including inscriptions on various media.

## The Editors

The editorial team of *Arts Asiatiques* comprises the Editor-in-Chief, an Editorial Board based in Paris, and an international Advisory Board. [See the list of members](#)

### Editorial Office

ARTS ASIATIQUES

Musée national des arts asiatiques - Guimet

6, place d'Iéna

75116 PARIS

[arts.asiatiques@efeo.net](mailto:arts.asiatiques@efeo.net)

Download the [instructions to the authors](#) [PDF 404 kb]

---

### Bank Detail

Titulaire: R/R Diffusion des publications de l'EFEO

Domiciliation: TPPARIS IBAN: FR76 1007 1750 0000 0010 0414 464 BIC: TRPUFRP1

(All bank fees have to be born by the customer)